



A specialised MSc
from a specialised
department

Master of Science (MSc) in Health and Social Care Management

GENERAL OUTLINE

The MSc in Health and Social Care Management draws upon the field of administration and management in conjunction with the interdisciplinary specialisation from the fundamental knowledge of

Economics,
Administration,
Sociology,
Law,
Informatics
and
Social Research

GENERAL INFORMATION

Organisation

Institution:
University of West Attica

Faculty:
Business, Economics, and Social
Sciences

Department:
Business Administration

Unit:
Social Policy

Subject - Aim

The programme aims at

A. providing students with advanced postgraduate level knowledge and knowhow, as well as research and practical training on the scientific field of Health and Social Care management.

B. establishing rigorous and specialized professionals in the development of research and technology in the administration and management of Health Service and Social Care, and contributing to the enduring improvement in the quality of offered services within the context of continuously changing socio-economic needs.

Knowledge-Skills & Career Prospects

Knowledge-Skills

The programme offers key knowledge for

A. the profound understanding of modern management, operational and administrative requirements of public and private Health Service and Social Care.

B. the design, implementation and management of interventions and developmental policies of the above mentioned services.

C. the deepening in modern financial-management, organisational-administrative methods, and methods for total quality management.

D. the development of skills in the design of policies.

E. the harmonisation of Health and Social Care Services in the new institutional setting of the EU, and international developments.

Research development

Our programme focuses on Methodological Techniques for the Development of Social Research, Inductive and Deductive approaches, Analysis and Synthesis of data, and on the capability to transform basic theoretical knowledge into innovative organisational and administrative application.

Strengthening of skills and capabilities

Discharge techniques, stress management, role-playing exercises, enhancement of personal quality and self-awareness, personal and social skills, management of occupational fatigue and burnout, job motivation and satisfaction of staff, development of communication skills, team interdisciplinary work, leadership and group dynamics, decision making and problem solving in modern labor intensive environments in health and social care services.

Fields of Education and Training by UNESCO

ISCED 0413 Management and Administration

Duration of Study 3 semesters

The first two semesters include lectures, tutorials, research coursework and exams.

In the third semester the MSc thesis is undertaken.

Credit units (ECTS) 90

Number of Modules 10

Total contact hours 520

Language Greek English

Start dates Winter term: 1st week of October Spring term: 1st week of March

Number of teaching weeks 13

Duration of weekly courses 2 days per week and 1 extra day (Saturday) every three weeks

Career Prospects

- ✓ Central Management Services & public administration in Health and Social protection organisations
- ✓ Private Health & Social Care companies
- ✓ Educational Organisations
- ✓ Volunteering Organisations
- ✓ Consulting & Research companies
- ✓ Professional career
- ✓ Academic career

PROGRAMME OUTLINE

Master of Science (MSc) in Health and Social Care Management

A'Semester- Section of modules

Social Management -Economics- Health and Social Care Management- **30 ECTS**

B'Semester- Section of modules

Administration and Services Administration - Quality of Health and Social Care - **30 ECTS**

C' Semester- Postgraduate Research

Social Research–Methodology and Development of Research Projects - **30 ECTS**

Undergraduate background of eligible candidates

Eligible candidates should have a first degree in the following fields:

- ✓ Administration and Economics
- ✓ Health and Social Welfare Sciences
- ✓ Law, Humanities and Social Sciences
- ✓ Sciences

Teaching Hours

Afternoon hours except Saturday

Students profile

Registered MSc students have graduated from a wide range of different scientific disciplines: Health and Social Welfare Management, Medicine, Law, Economics, Nursing, Midwifery, Sociology, Physical Education and Sport Science, Special Education, Speech and Language Therapy, Psychology, Philosophy and Pedagogics, Occupational Therapy, Business Administration, Community Health, Political Sciences and holders of other postgraduate degrees.

Academic Staff profile

Academic Staff, Experts and Researchers of International and National Organisations, Managers of Regional Health Authorities, Managers of Hospitals and Social Care Organisations, General Secretaries and Senior Executives of the Ministry of Health, CEOs of Certification Organisations, etc.

Entry requirements

- ✓ Grade of the undergraduate degree or other postgraduate degree (30%)
- ✓ Grades of similar modules to the ones of the MSc (10%)
- ✓ Knowledge of English (and any other European language) (15%)
- ✓ Professional experience (15%)
- ✓ Scientific research & publications (15%)
- ✓ Reference Letter (5%) and
- ✓ Interview (10%).

Application Documents:

- ✓ Application form for the MSc
- ✓ Certified copy of undergraduate degree
- ✓ Certificates of study with transcript
- ✓ CV
- ✓ Certificate of proficiency in English or other European language
- ✓ Copies of publications in peer-reviewed journals, copies of monographs
- ✓ Two reference letters
- ✓ Copy of ID or passport
- ✓ Any other relevant information



Module attendance

Compulsory

Part time attendance

is possible by increasing the length of studies

Total Mark

67% from taught courses
33% from thesis

Assessment

Written exams,
coursework
and
completion of thesis

Fees

2.500 €

Social Care

- A. Full healthcare coverage
- B. Discount travel card
- C. Free meals

Tutor-mentor

Each MSc student will be assigned a tutor-mentor from the department.

Academic Staff

13 Academic Professors
and 15 Specialised Scientists

Director: Professor Sotirios Soulis



Academic Facilities

- A. Free access to the University Library
- B. Free access to the University Medical Centre
- C. Free access to the University Social Services
- D. Access to the University Gym and other sports facilities

Application period

15th of May-25th of June

Exam periods

2 per module

Enrolment date

20th-30th of September

Scholarships

Basic criteria for getting a scholarship are the evaluation ranking of the candidate and his/her income status.

Contact

University of West Attica, Campus 2, Thivon 250, 12241, Egaleo

PHONE NUMBER:0030-210-5381261

e-mail: secr_mschscm@uniwa.gr

Website: <https://healthcare-management.uniwa.gr/>

Contact hours: Monday-Friday (11:00-13:00)



1. CURRICULUM

SEMESTER COMPULSORY COURSES IN FULL- TIME PROGRAMME

First Semester

Topic: Social Management - Economics - Health and Social Care Management

s / n	Code	Compulsory courses	Credits (ECTS)
1	MDYP1 1	Social Politics and Economics of Social Protection	7.5
2	MDYP1 2	European and Comparative Social Law	7.5
3	MDYP1 3	Applied Information and Communication Technologies (ICT) in Health and Social Care	7.5
4	MDYP1 4	Field Research: Methodological Technical Development of Social Research	7.5
		Total Credits	30

Second Semester

Topic: Administration and Services Administration - Quality of Health and Social Care

s / n	Code	Compulsory courses	Credits (ECTS)
1	MDYP2 1	Organizational Change and Development of Health Services and Social Care	7.5
2	MDYP2 2	Bioethics Applications in Health and Social Care Services	7.5
3	MDYP2 3	Management of quality Systems in Health Services and Social Care	7.5
4	MDYP2 4	Quality Care, Therapeutic Efficiency and Quality of Life	7.5
		Total Credits	30

Third Semester

Topic: Planning - Social Research - Methodology and Development of Research Projects

s / n	Code	Mandatory Diploma Thesis	Credits (ECTS)
1	MDYP3 1	Strategic and Business Planning in Health Services and Social Care	5
2	MDYP3 2	Management of Health and Social Care Services in Local Government	5
3	MDYP3 2	Postgraduate diploma thesis - MasterThesis	20
		Total Credits	30
		Overall Credits	90

ACADEMIC STAFF

I.A Introductory Direction of Administration of Health Care and Welfare



Director: Professor S. Soulis
Economics of Health and Social Protection

fmr Expert at the Directorate of OECD in Social Affairs, European Commission
fmr Vice President of the Committee of Experts for the reform of Greek National Health System
fmr Advisor of Ministry of Health and Ministry of Labour
fmr National Representative to the International Labour Office(ILO) and to the International Social Security Association(AISS)
Research Associate at the Foundation of Biomedical Research Academy of Athens
fmr Vice President of the Technological Educational Institute of Ionian Islands
Vice President of the Research Committee of TEI of Athens
Principal Investigator of Publishing Series



Professor M. Sarris
Sociology of Health and Quality of Life

fmr Administrative Officer of the National Transplant Service
fmr Expert of National and International Organisations
Research Associate at the Foundation of Biomedical Research Academy of Athens
Director of the Research Laboratory of Social Innovation - Health, Social Protection, Social Entrepreneurship



Professor M. Tsirintani
Health Information Systems

fmr Manager of Health information Systems in the 1st Health Region of Attica
Expert in the field of Telemedicine & Electronic Medical Records
Academic Administrator of the ERASMUS programme of the Faculty of Management and Economics (Department of Business Administration)
Executive of Health Services in the public and private sector



Professor G. Pierrakos
Organisation and Management of Primary Health Care

Fmr Representative of Greek Union of Nurses in International Organisations
Fmr President of the Department of Business Administration
Researcher in International and National Organisations



Professor G. Amitsis
Social Security Law

Expert of National and International Organisations
Representative of TEI of Athens in HOUSING EUROPE
Advisor of Ministry of Health and Ministry of Labour
Coordinator of the Greek Annex of Academic Network against Poverty (**Academics Stand Against Poverty Network**)



Professor M. Mitrosyli
Health Law

Fmr Deputy Greek Ombudsman – Social Protection
Member of the Committee of the Health Ministry for the protection of persons with mental disorders
Member and rapporteur of Legislative committees
Collaborator in International Organisations, EU and the National Centre for Social Research



Assoc. Professor A. Goula
Organizational Culture in Health Care Management

Executive of Health and Social Care Services
Researcher of National Organisations



Lecturer A. Kremmyda
Public Administration –Logistics of Healthcare Units

Deputy Manager of ‘ATTIKON University Hospital’

I.B Academic Staff from other Universities



Professor I. Mantas
National and Kapodistrian University of Athens
Health informatics

fmr President of the European Federation for Medical Informatics Association (EFMI)
Executive of the International Medical Informatics Association (IMIA)



Professor N. Polyzos
Democritus University of Thrace
Organisation and Management of Health Services

fmr Secretary of Ministry of Health
fmr General Manager of the 'Onassis Cardiac Surgery Centre'
fmr Manager of 'ATTIKON' University Hospital



Professor I. Yfantopoulos
National and Kapodistrian University of Athens
Social Policy and Administration

Fmr President of the National Centre for Social Research
Fmr Expert WHO, ILO, World Bank, OECD, European Commission
Fmr Hospital President
Fmr Vice President of the National Organisation of Social Care



Assoc. Professor B. Kefis
Panteion University
Administration of Public Services & Organisations

Fmr President of the Department of Public Administration
Visiting Professor at Universities Abroad



Assoc. Professor K. Souliotis
Vice Rector of University of Peloponnese
Policy and Health Economics

fmr President OPAD
fmr Vice President EOPYY
OECD expert

FACULTY ASSOCIATES

Qualified personnel with administrative experience in the sector of Health and Social protection



A. Gerostathou

Political Scientist - International Relations
Executive of Ministry of Health and WHO



Dr.S. Dimakou

Expert in Health Economics & Statistical Methods in Healthcare
Research Associate in University of West Attica



Dr. I. Pateras

Expert in Health Economics
Research Associate in University of West Attica



Dr.Ch. Platis

Expert in Organisation and Management of Health Services
Head of Study and Research in the health and social policy sector EKDDA
Hospital manager
Research Associate in University of West Attica



Dr. An. Sepetis

Expert in Finance, Sustainability and Environmental Management
Fmr Hospital manager
Research Associate in University of West Attica



Dr.M.A. Stamouli

Expert in Health Informatics & Statistical Methods in Healthcare
Executive of the Hellenic Statistical Authority
Research Associate in University of West Attica



Dr.A. Syngelakis

Expert in Social Dentistry, Public Health & Primary Health Care
fmr President of the Institute of Child
Executive of the NSRF Task Structure of the Ministry of Health
fmr Vice President of the National Ambulance Services
fmr Deputy Manager of 1stHealth Region
Research Associate in University of West Attica



Dr. D. Latsou

Expert in Economic Analysis of Social Policy
Research Associate in University of West Attica



D. Bartsokas

Expert in Economics and Hospital Management
Operational Researcher
Fmr Hospital manager
Research Associate in University of West Attica



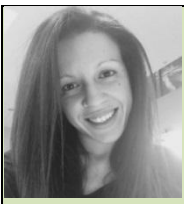
Ph. Marini

Solicitor - Social Law
Expert in National and International Organisations



Ch. Natsis

Expert in Organisation and Management of Agencies & Informatics
Research Development in Humanities and Social Sciences
Research Associate in University of West Attica



Dr. G. Tsakni

Expert in Economics and Modern Methods of Analysis of Public Administration and
Management of Environment and Health
Research Associate in University of West Attica